


**Texas Department of Public Safety**  
Commercial Vehicle Enforcement



**25 Most Common Commercial Violations Discovered During Roadside Inspections**

10/25/2022 DPS CVE Training Unit

1

---

---

---


---

---

---

---

---



**Texas Department of Public Safety**  
Commercial Vehicle Enforcement

**Top 5 Most Common Violations**

- 1 Oil and Grease Leak
- 2 Windshield Washing System
- 3 Tires Less Than 2/32 of An Inch
- 4 Inoperable ID Lamp
- 5 Brake Hose / Tubing Chafing and Kinking

10/25/2022 DPS CVE Training Unit 2

2

---

---

---


---

---

---

---

---



**Texas Department of Public Safety**  
Commercial Vehicle Enforcement

**Next 5 Most Common Violations**

- 6 Brake out of Adjustment
- 7 Inoperable Turn Signal Lamp
- 8 Inoperable Side Marker Lamp
- 9 Defective / Inoperative Automatic Slack Adjusters
- 10 Defective ABS Malfunction Indicator Lamp for Trailer made after 3-1-98

10/25/2022 DPS CVE Training Unit 3

3

---

---

---


---

---

---

---

---



Texas Department of Public Safety  
Commercial Vehicle Enforcement

### Next 5 Most Common Violations

- 11 Inoperable / Obscured Stop Lamp(s)
- 12 No / Expired Commercial Motor Vehicle Inspection Certificate
- 13 Fire Extinguisher Violation
- 14 Fail to Maintain a CMV Subject to Your Control
- 15 Exhaust Leak Under Truck Cab or Sleeper

10/25/2022 DPS CVE Training Unit 4

4

---

---


---

---

---

---

---



Texas Department of Public Safety  
Commercial Vehicle Enforcement

### Next 5 Most Common Violations

- 16 Inoperable License Plate Lamp
- 17 Tread / Sidewall Separation
- 18 Inoperable Clearance Lamp
- 19 Power Steering Violations
- 20 Inoperable Backup Lamp

10/25/2022 DPS CVE Training Unit 5

5

---

---


---

---

---

---

---



Texas Department of Public Safety  
Commercial Vehicle Enforcement

### Next 5 Most Common Violations

- 21 Inoperable Head Lamp(s)
- 22 Damaged Windshield
- 23 Brakes Out of Service – 20 Percent or More
- 24 Brake Hose or Tubing Chafing and or Kinking – Under Vehicle
- 25 Tire – Flat

10/25/2022 DPS CVE Training Unit 6

6

---

---


---

---

---

---

---



Texas Department of Public Safety

Commercial Vehicle Enforcement

## 26<sup>th</sup> Most Common Violation

- Truck Tractor Lower Rear Retroreflective Sheeting for a Vehicle Manufactured after July 1997.

10/25/2022

DPS CVE Training Unit

7

---

---

---

---


---

---

---

---

7



Texas Department of Public Safety

Commercial Vehicle Enforcement

## Retroreflective Sheeting Rear of Truck Tractors

- FMVSS 571.108 S8.2.4
  - Element 1 – Horizontal, alternating colors, fenders, mud flaps or the back of the cab
  - Element 2 – Two pairs of white strips, to the right and left upper contours of the cab

10/25/2022

DPS CVE Training Unit

8

---

---

---

---

---

---

---

---

8



9

Updated 7-21-10

---

---

---

---

---

---

---

---

9



10

---

---

---

---

---

---

---

---



11

---

---

---

---

---

---

---

---



12

---

---

---

---

---

---

---

---



13

Updated 7-21-10

13

---

---

---

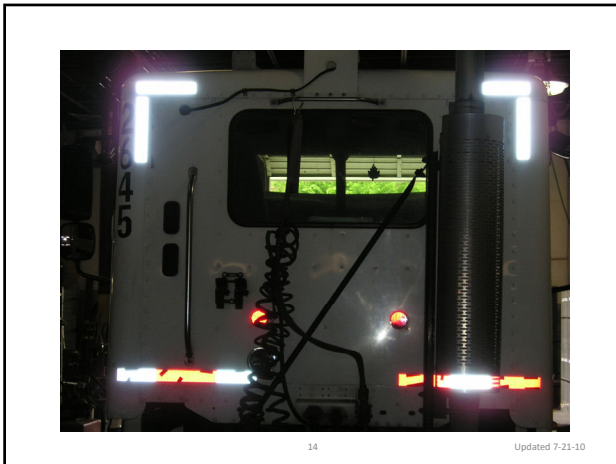
---

---

---

---

---



14

Updated 7-21-10

14

---

---

---


---

---

---

---

---



Texas Department of Public Safety

Commercial Vehicle Enforcement

Questions?

10/25/2022

DPS CVE Training Unit

15

15

---

---

---

---

---

---

---

---